

ALS and Augmentative Communication: Seeking Improved Outcomes through Early Engagement in Assessment, System Design and Implementation

John M. Costello
Boston Children's Hospital
Director, Augmentative Communication Program and
ALS Augmentative Communication Program

Contacts: John.costello@childrens.harvard.edu
<https://www.facebook.com/ACPCHBoston>



Augmentative Communication Program at Boston Children's Hospital

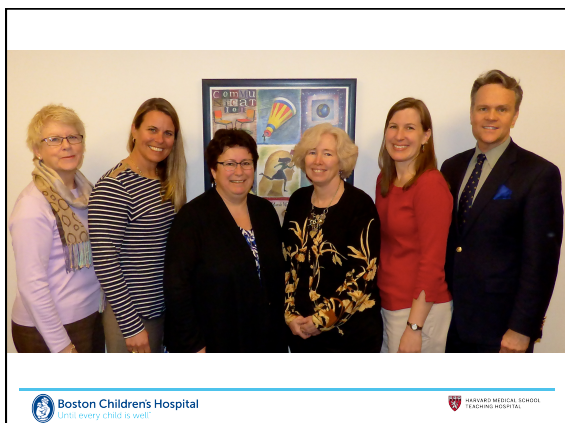
Update Page Info

For lots of related resources, Join us on facebook at:
<https://www.facebook.com/ACPCHBoston>



Augmentative Communication Program







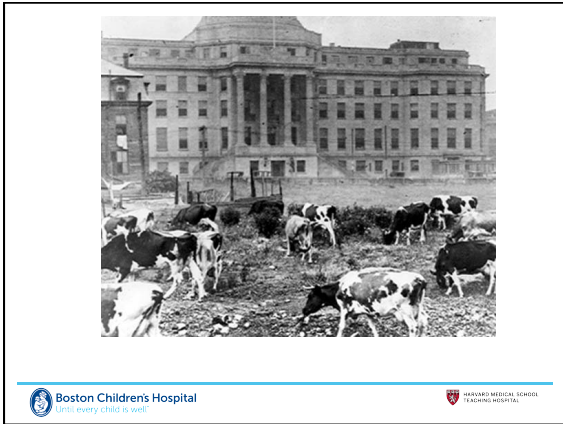


BOSTON CHILDREN'S CHILDREN'S HOSPITAL

Background and Overview of AAC Service

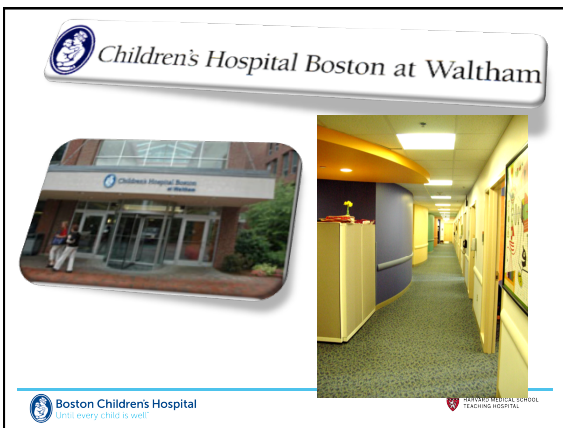
- BCH:
 - 400 beds
 - 4 ICUs
 - Ongoing plans for expansion & increased # of beds
- Established **outpatient** AAC clinic for nearly 40 years
- AAC Service provision in ICU/acute care for 25+ years
- Formal inpatient position for ~10 years
- Current positions
 - 2x 1.0 FTE, 2 SLPs
 - Inpatient grew from Augmentative Communication Program
 - Focus on AAC implementation through the continuum of care
 - Equipment closet with a variety of AAC tools and materials
 - Average caseload: variable; ~30 patients on a given day and rising!



 Boston Children's Hospital
Until every child is well.

 HARVARD MEDICAL SCHOOL
TEACHING HOSPITAL



 Boston Children's Hospital
Until every child is well.

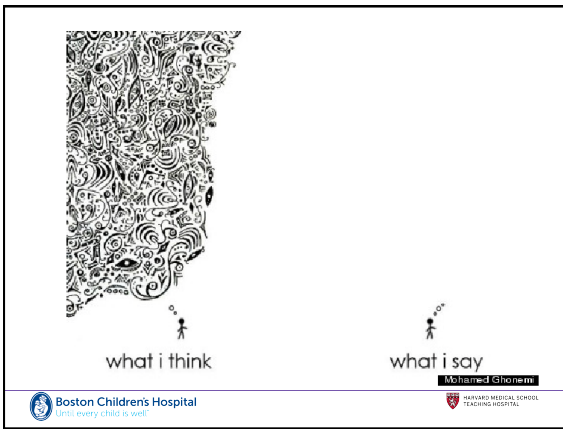
 HARVARD MEDICAL SCHOOL
TEACHING HOSPITAL



 Boston Children's Hospital
Until every child is well.

 HARVARD MEDICAL SCHOOL
TEACHING HOSPITAL







From: Melissa B:
Date: September 3, 2014 at 3:25:28 PM EDT
To: "Costello, John (Otolaryngology)" <john.costello@childrens.harvard.edu>
Subject: update

Hi John,

I just wanted to let you know Mom passed away yesterday afternoon. Dad and I were both able to be with her and although we are terribly sad, our family is glad she is no longer suffering.

I hope to reconnect with you soon to tell you in person how much we really, really appreciate all the kindness and hard work you put into helping Mom. You not only gave her tools to help, but showed compassion and made her feel safe and cared for. Your ability to gently convince her to learn to use the communication boards you developed early on, even though she didn't know why they would be important, was so important. THOSE tools turned out to be our only connection with her in the end. YOU knew that would be the case all along, but we didn't know until it was all we had left. Perhaps most importantly, you gave her her authentic voice when it would have been gone...and now we have it to cherish.

Thank you for all your support.

Melissa



My Ice bucket challenge





A little history

How does a Children's Hospital end up having a dedicated ALS-AAC Program?




Long history of Proactive Intervention at Boston Children's that now supports people with ALS

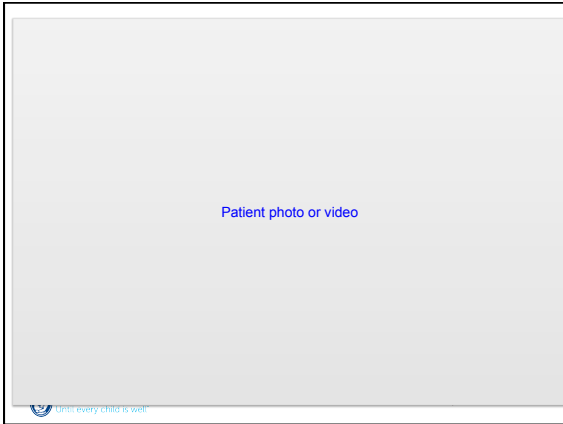


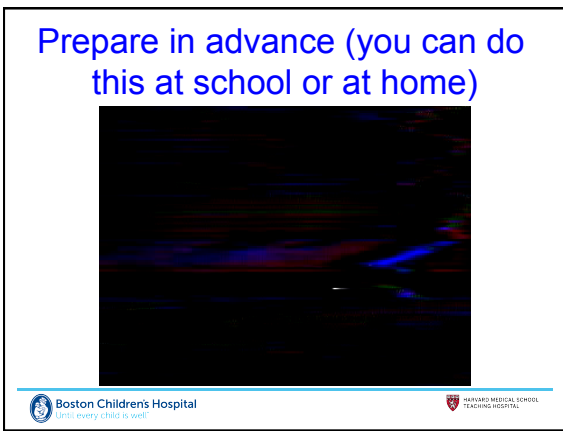
1001 CURS...
Patient photo or video



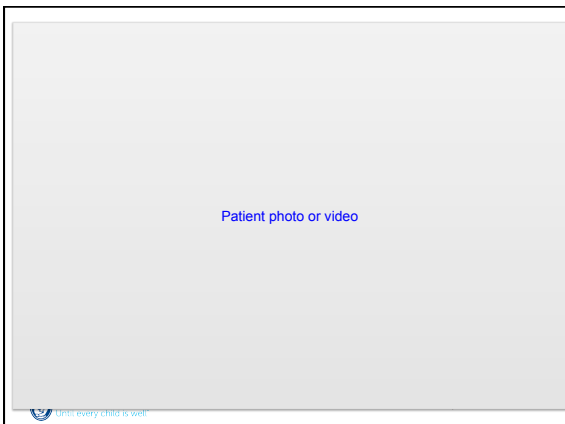
Patient photo or video

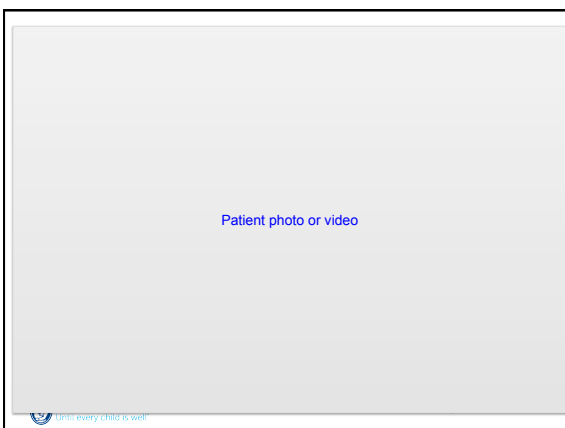












Sometimes I was tempted to 'reject' but I learned a valuable lesson from an 11 year old!

	mom Dad	friends here?				bathroom				
	Nana									
12.22.1997	Annie	thank you	sucks!	?						
	YES	NO	OK							

Boston Children's Hospital
UPMC: every child is well

HARVARD MEDICAL SCHOOL
TEACHING HOSPITAL

Program Mission:

The mission of the ALS Augmentative Communication Program is to provide comprehensive augmentative communication/ assistive technology assessment, trials and training to people with ALS from the time of diagnosis through the lifespan.



Program Goal:

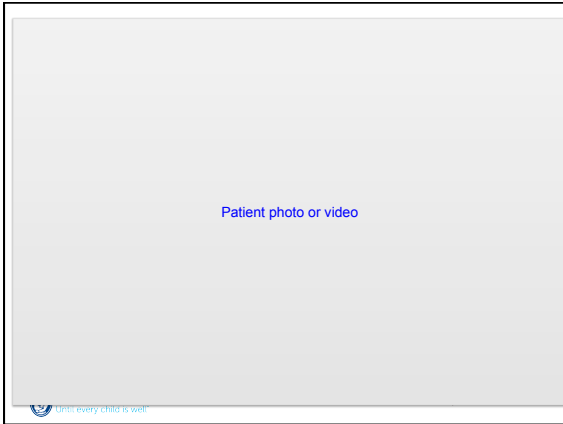
“Our goal is to support communication and daily functional needs, sustain personal control and dignity, facilitate continued social and vocational goals and maintain quality of life through thoughtful implementation of solutions ranging from high technology to quick access/low tech tools and strategies. This is best accomplished by ACP-ALS clinicians constantly communicating and collaborating on how best to support patient-centered functional outcomes in the presence of changing physical abilities while providing support to a person with ALS and his/her family.”



What to expect:

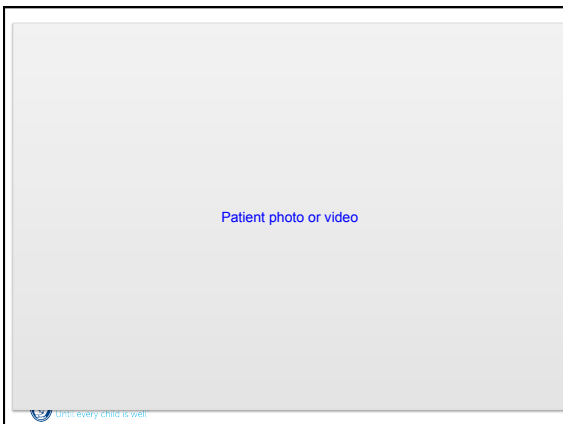
Our team hopes to meet people as early as possible after diagnosis but remains eager to support people with ALS at any time during their journey.







Dear John, Amalya and Peggy,
 I want to thank you for everything you did for my mother, [REDACTED], and for our family. Although she passed before she was able to make full use of the message banking, I think our visits with you were an important part of her journey. As you know, ALS is a disease of continual loss, and all of our energies were focused on that loss until our first meeting at Children's with John. At that time, we were able to discuss the technological options available to my mom, but what we were really talking about was hope, an ability to be proactive, rather than passive, and the opportunity to hold onto a piece of who she was. What a precious gift. At the risk of embarrassing John, after that visit I started talking about I had met an angel in an in-stant.





QUICK OVERVIEW OF ALS CLASSIFICATIONS


 Boston Children's Hospital
Until every child is well.


 HARVARD MEDICAL SCHOOL
TEACHING HOSPITAL

Types of ALS/MND

- **Sporadic** - the most common form of ALS in the United States - 90 to 95% of all cases.
- **Familial** - occurring more than once in a family lineage (genetic dominant inheritance) accounts for a very small number of cases in the United States - 5 to 10% of all cases.


resource: <http://www.alsa.org>


 Boston Children's Hospital
Until every child is well.

 HARVARD MEDICAL SCHOOL
TEACHING HOSPITAL

Onset



- Bulbar
- Spinal
- Atypical
 - Example: Brachial amyotrophic diplegia (man in the barrel): severe muscle involvement was confined to the upper limbs, predominantly the proximal portion and shoulder girdle, sparing the face and the legs until late in the disease's course or until the terminal stage.

 Boston Children's Hospital
Until every child is well.

 HARVARD MEDICAL SCHOOL
TEACHING HOSPITAL

Bulbar onset Resource: ALS/CA fact sheet 2016

- **What is it?**
 - Bulbar ALS destroys motor neurons in the corticobulbar area of the brainstem in the early stages of ALS.
 - The corticobulbar area controls muscles of the face, head and neck.
 - Bulbar ALS usually progresses faster than limb onset
- **How Common is Bulbar ALS?**
 - observed in 20-30 percent of people with ALS.
 - Almost all people with ALS display bulbar symptoms at later stages



 

Bulbar onset Resource: ALS/CA fact sheet 2016 (cont'd)

- **Symptoms Affecting Speech**

Changes in voice and speech.



 - Harsh, hoarse or strained voice. -Breathy speech pattern.
 - Poor articulation.
 - Decrease in range of pitch and loudness of voice.
- **Other Symptoms**
 - Spasms in muscles of the jaw, face, voice box, throat and tongue.
 - Inappropriate excessive laughing and crying.
 - Brisk jaw jerks.
 - Involuntary twitching in the muscles of the tongue.
 - Dysphagia
 - Vocal cord spasms causing the sensation that air cannot be moved in or out.

Spinal onset

- Initial symptoms may affect only one leg or arm. Individuals may have awkwardness and stumbling when walking or running. They may have difficulty lifting objects or performing tasks that require manual dexterity (e.g., buttoning a shirt, tying a shoe, turning a key). Eventually, the individual will not be able to stand or walk, get in and out of bed without help, or use hands and arms to perform activities of daily living, such as washing and dressing.
- 70-80% of patients, symptoms begin with limb involvement
- Eventually develop bulbar symptoms

Resource: Orphanet Journal of Rare Diseases 20094:3
DOI: 10.1186/1750-1172-4-3

Spinal onset (cont'd)

- Upper motor neuron involvement include spasticity and exaggerated reflexes
- Patients with upper limb onset have twice the likelihood for onset in the dominant arm, compared with the nondominant arm
- Symptoms of lower motor neuron degeneration include muscle weakness and atrophy, muscle cramps, and fasciculations



- Current research data suggest that up to 50% of people with ALS will never develop significant changes in thinking or behavior, over and beyond normal psychological reaction to diagnosis and symptoms.
- Up to 50% of people with ALS will experience some degree of change in thinking or behavior, with approximately 25% of those people with ALS developing a full blown dementia.

ALS Association fact sheet rev 2014



Fronto-temporal dementia

- Fronto-temporal refers to the forward part of the brain that sits above the eyes and behind the temples. Lowering of the function of this region can lead to impulsive, compulsive, and emotional behavior.



There have been many clinic-based studies of cognitive and behavioral impairment in ALS, using cross-sectional cohorts of patients. These studies show

- up to 20% of ALS patients demonstrate dementia,
- roughly 30% of ALS patients develop impairment without dementia, and
- up to half of ALS patients are cognitively normal.
 - Lomen-Hoerth, C., et al., *Are amyotrophic lateral sclerosis patients cognitively normal?* Neurology 2003. 60: p. 1094-1097.
 - Murphy, J., et al., *Continuum of frontal lobe impairment in amyotrophic lateral sclerosis.* Arch Neurol, 2007. 64: p. 530-534.

<http://www.alsa.org/als-care/resources/publications-videos/factsheets/fyi-cognitive-impairment.html>



A word about pseudobulbar affect

- Some people with ALS develop an unusual symptom called "pseudobulbar affect." They may cry or laugh at inappropriate times or discuss how once they start feeling an emotion, it is difficult to shut it off. Sometimes, pseudobulbar affect can be present when a person feels more emotionally reactive in general, with more intensity to the emotion that is experienced than normal. Pseudobulbar affect is common in ALS and is the result of a brain reflex that is no longer working correctly. It does not necessarily mean that a person is feeling anxious, sad, depressed, or emotionally distraught. People with ALS can have pseudobulbar affect and no other cognitive, behavioral, or psychological symptoms.

ALS Association fact sheet rev 2014





As appropriate, Speech-Language Pathology will:

- introduce strategies to minimize fatigue associated with speech including: strategies to enhance intelligibility or preserve energy, and may introduce varied voice amplifiers.
- May introduce our model of Message Banking and/ or options for Voice Banking,
- partner with patient and family to create – over time – custom quick access communication tools





As appropriate, Speech-Language Pathology will (cont'd):

- Introduce and assess various communication technologies to support face to face communication as well as communication through internet/telephone.
- Establish and coordinate evidence based trials
- assess and provide call systems to meet individual needs.
- Provide partner training

Also provide:

- Home-based services may be available when patient can no longer travel to the center.
- Tele-support
- Web based training modules (late 2016)
- Web based downloadable templates (late 2016)


 


 **TechKnow**
SATURDAY 7:30E/4:30P




 

Begin with
THANK YOU
to many extraordinary
people with ALS

 Boston Children's Hospital
Until every child is well


 HARVARD MEDICAL SCHOOL
TEACHING HOSPITAL


Patient photo or video

 *Until every child is well*

Opening statement:



***“My goal is to
waste your time”***

 Boston Children's Hospital
Until every child is well

 HARVARD MEDICAL SCHOOL
TEACHING HOSPITAL



Second statement:

“You are stuck with us”


AAC/Speech Pathology Protocol of Assessment Considerations

Speech strategies	
Partner training	
Amplification considerations	
Amplification while using bipap	
Call system for emergency and attention	
Quick access encoding strategies (non-electronic)	
Electronic encoding	
Quick access encoding strategies (non-encoding)	
Writing strategies	
Message Banking	
Voice Banking	
Speech Generating Device assessment	
Speech Generating Device trial for Practice Based Evidence	
Training, implementation/integration	



Occupational therapy/Assistive Technology Protocol of Assessment Considerations (NOT part of today's discussion)

Physical Access Control Site assessment	
Positioning/support	
Access to mobile technology	
Phone access	
Call system/attention signal access	
Environmental control	
Access to books (hardcopy or digital)	
Computer access: keyboard	
Computer Access: mouse	
Computer Access: speech/voice	
Speech Generating Device Access	
Training	





Based on assessment of current voluntary motor abilities, Occupational Therapist/AT specialist:

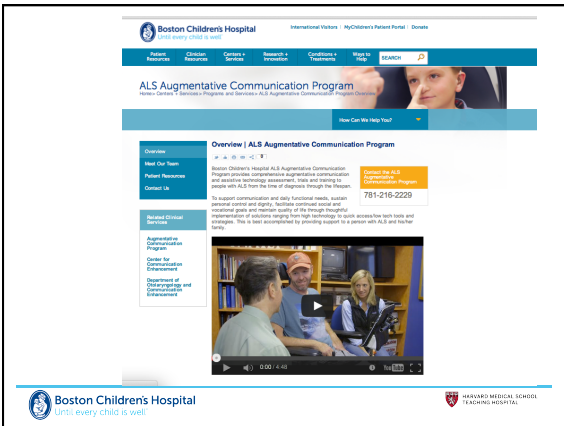
- **identify adaptations and tools to facilitate continued physical access to daily activities.** A wide spectrum of options exist, ranging from minor modifications to one's computer keyboard and mouse to hands free control of a computer, tablet and smartphone.
- In addition to supporting hand function as much as possible, **voluntary movements of one's eyes, head and feet are explored to minimize the overuse** of any one muscle group.



Based on assessment of current voluntary motor abilities, Occupational Therapist/AT specialist

- Accommodations to minimize fatigue and facilitate function often include a combination of:
 - **positioning mounting adaptations,**
 - **low and high tech adaptive pointers,**
 - **alternative computer mice and switches**
- In addition to facilitating one's access to written and spoken communication, **email, the Internet and social media, options for independent access to reading, television operation and other leisure time activities can also be addressed.**



 




The screenshot shows the website for the ALS Augmentative Communication Program. The header includes the Boston Children's Hospital logo and navigation links. The main content area features a video player showing a person using a communication device. Text on the page describes the program's goal to support communication and daily functional needs for ALS patients.



 

SPEECH STRATEGIES

Speech strategies

- Pacing/segmenting with breath control
- Breathing awareness (diaphragmatic vs. clavicular)
- Reduce gravel with quieter voice (in concert with amplifier)
- Over articulation (without strain)
- Economizing
- Stretching – NOT oral motor exercise/repetitive motion. Discuss issues of muscle recovery.
- Letter cueing 
- Topic cueing
- Counsel on positioning/support
- Counsel on speech fatigue/over-use and difficulty with recovery

Letter Cue board

THE WORD BEGINS WITH.....

Q W E R T Y U I O P

A S D F G H J K L



Z X C V B N M *Start again*

br cr fr gr tr pl str *Next word*

bl cl fl gl sw dw tw *End*


sl sc sk sm sn sp

sw squ spl spr scr

Many patients now ask about medications and we ALWAYS refer them back to their physician

Nuedexta - Improving Quality of Life for ALS/MND Patients January 12, 2016
 By: ALS Worldwide



Nuedexta, known for minimizing pseudo-bulbar affect, also is now recommended for improving chewing and swallowing, control of facial muscles, speech, and respiration.

Boston Children's Hospital **HARVARD MEDICAL SCHOOL**
TEACHING HOSPITAL

While we do not focus on feeding swallowing...

HOW TO SAVE YOUR OWN LIFE: THE SELF-HEIMLICH MANEUVER

Published 10/30/2013 by rffoadmin

Byline: Roya Sayadi and Joel Herskowitz
 Illustration: Anet James from "Swallow Safely"

[INFO note: This article is for informational purposes only and should not be used as a substitute for consultation with and expert training by an appropriate health care professional. Also, an internet search on "self Heimlich maneuver" will result in additional articles and videos on this topic.]

We read in newspapers or online every day about someone's heroism in administering the Heimlich maneuver to someone choking on food.

But suppose that other person were not present? What then? Would they simply choke to death? If that person were YOU, what would you do?

...if you can't speak, breathe, or cough, do the Heimlich maneuver — on yourself.

Boston Children's Hospital **HARVARD MEDICAL SCHOOL**
TEACHING HOSPITAL

PARTNER TRAINING

Boston Children's Hospital **HARVARD MEDICAL SCHOOL**
TEACHING HOSPITAL

Partner training

- Identify communication partners/supports
- Share anecdotal feedback from people with ALS and families
- Share handout on "Guidelines to Communication Partners"
- Discuss strengths and major challenges with asking yes/no questions
- Discuss the pros and cons of prediction and permissions that should be in place.

Patient photo or video

ALS Augmentative Communication Program Guidelines for Communication Partners

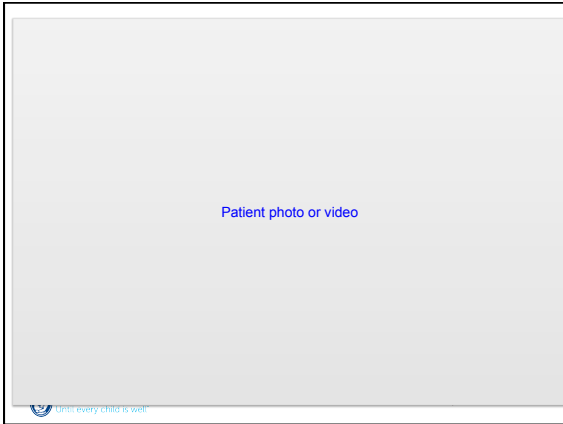
(Identified by young adults and adults who are losing ability to speak)
No one else BUT these are some points to consider putting into practice.

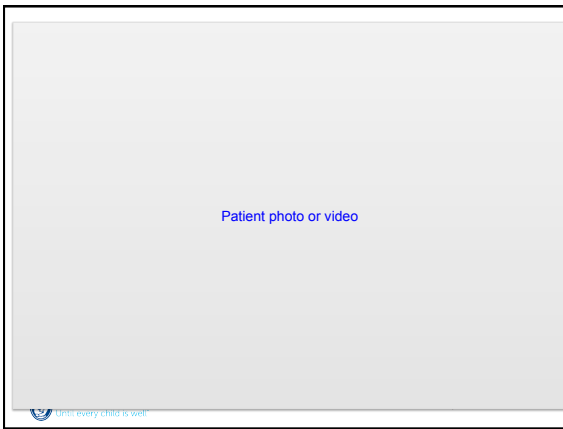
THANK YOU for the generous guidance from so many of our ACP patients!

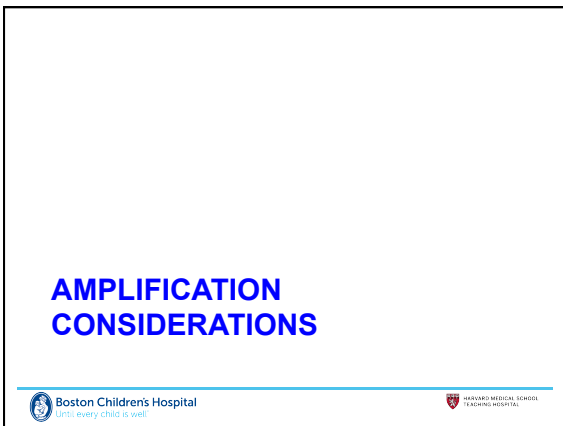
1. Don't talk louder just because I can't talk.
2. Don't talk over me as I try to communicate. My speech is compromised and it takes too much energy to continue to try to get my message across while you interrupt/over ride me.
3. Don't interrupt - PLEASE let me finish my thought, otherwise it sends the message that you don't value what I have to say.
4. Recognize that when an efficiency strategy is used by someone with compromised speech (using fewer words or speaking in a direct manner) it should not be confused with a lack of sophisticated linguistic competence or social skill.
5. If you didn't call me "dear", "honey", or other terms of endearment before my disease, don't change the way you talk with me now unless we have recently developed a more intimate relationship.
6. Don't touch me (move my arm, etc.) or my chair without letting me know you are going to and requesting permission.
7. I know you are trying to be efficient or save me from fatigue by speaking FOR me, but please ask my permission before sharing information related to me.
8. Even though you may know the requested information ALWAYS ask me if I want you to speak for me so everyone in the conversation is clear that I am in charge.
9. I'd rather you talk with me, tell me stories and fill me in on your life - even when I have a hard time holding up my end of the conversation - AS OPPOSED TO NOT talking with me because you know I have a hard time responding.

Oh, I'm sorry...
Did the middle of my sentence interrupt the beginning of yours?

Thank you!







Amplification considerations

- Counsel regarding impact of speech efforts on fatigue
- Discuss pro-active approach (as appropriate) to preserving energy
- Introduce amplification options
- Identify microphone headset placement considerations with head movement



Often will be told:

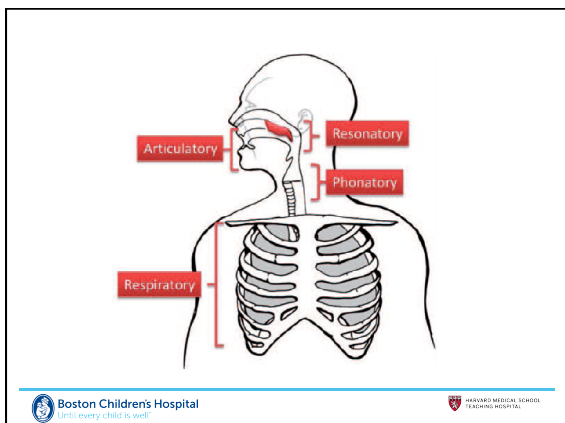
“I can talk loud enough, I just get worn out by 2 in the afternoon and am too fatigued”



Speech production requires:

- Articulation
- Phonation
- Resonation
- Respiration





Respiration

An often noted symptom is patient taking more frequent and longer pauses between words or word clusters when speaking.

*** many people continue to try to speak as many words as possible on a breath and 'trail off'

Phonation

Perceptive changes in voice quality and loudness may be first symptoms

Attempts to compensate may exacerbate issue
(sound more gravelly when trying to speak louder)

Articulation

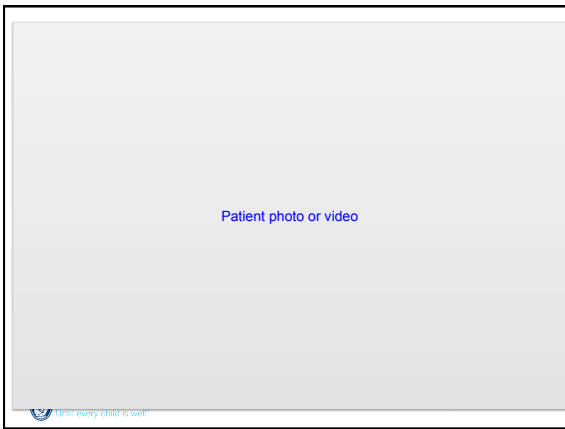
Highly coordinated movement of lips, tongue and jaw

Resonance

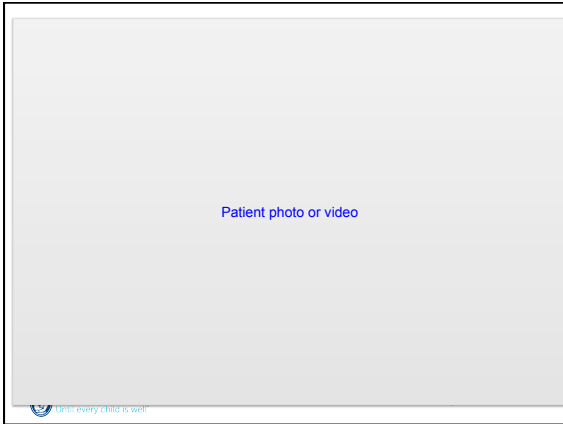
- Velopharyngeal muscle weakness leads to continual opening of velopharyngeal port during speech

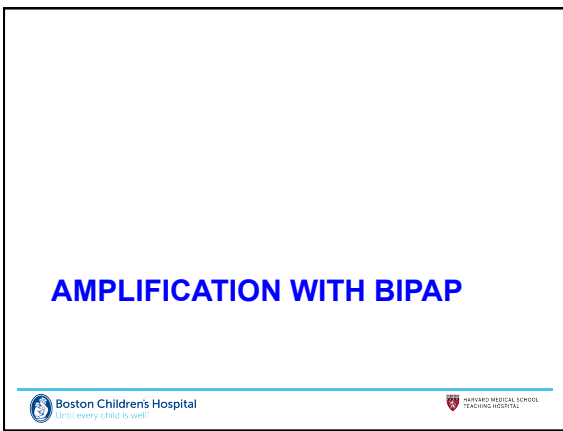


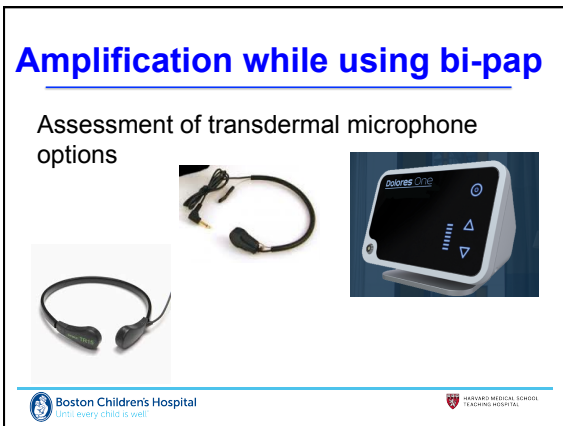


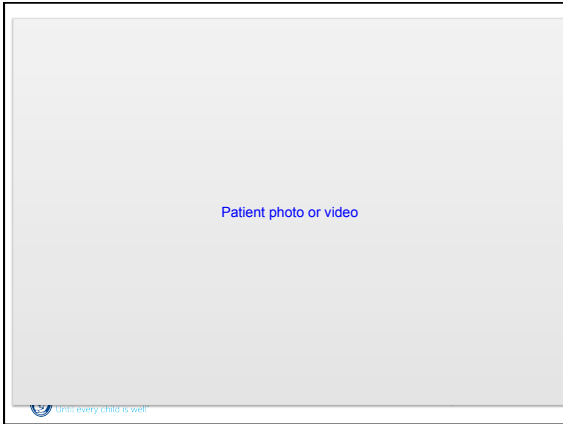


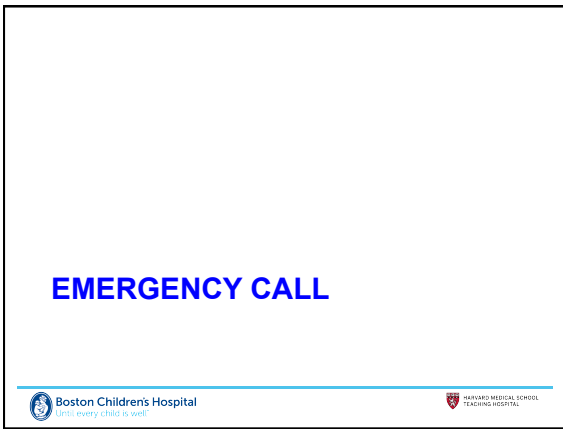


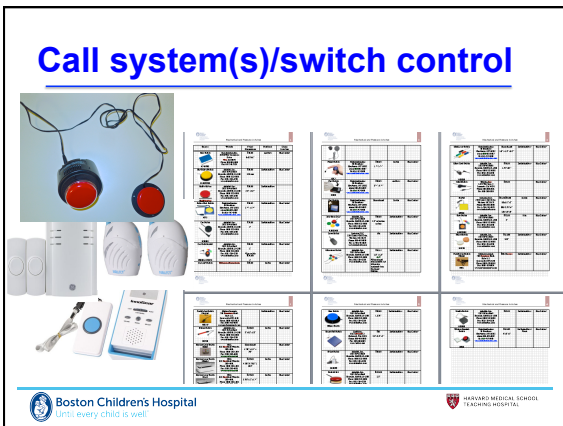












When using in the same house....

Boston Children's Hospital
Until every child is well

HARVARD MEDICAL SCHOOL
TEACHING HOSPITAL

Home alone and calling 911 when speech is difficult

The Silent Call Procedure
If you need to call 9-1-1 and you are unable to speak for any reason, once the call is answered:

Press

- 1 If you need police
- 2 If you need fire
- 3 If you need an ambulance

If the 9-1-1 dispatcher asks questions, press

- 4 For YES
- 5 For NO

Source: MA State 911 Department and the Executive Office of Public Safety and Security

Mass.gov

Boston Children's Hospital
Until every child is well


HARVARD MEDICAL SCHOOL
TEACHING HOSPITAL

Phone app for emergency requiring no speech

Boston Children's Hospital
Until every child is well

HARVARD MEDICAL SCHOOL
TEACHING HOSPITAL

Hands Free Voice-controlled access of iPhone.
Good, but not great (yet).







In September, the announcement came out:
Apple's voice-controlled personal assistant Siri becomes even more powerful with iOS 8, including an entirely hands-free mode that allows users to ask questions and accomplish tasks by simply saying the words "Hey, Siri."

What we have learned so far by supporting many people to use this feature...



PHONE CHARGING STATUS
The phone must be plugged in/charging. Others have had difficulty and/or failure if using a portable charging station or car charger. It is consistent if plugged into the wall or the computer. Some power wheelchair manufacturers are now advertising that they are incorporating charging ports for devices into the controls (or it is an add-on feature). When we have inquired whether HeySiri treats this charging port as a "portable battery" and fails to function, the manufacturer reps we have contacted have told us they have not yet tried it. So, the jury is still out on using HeySiri with the charge working off the wheelchair battery.



MAKING IT FUNCTIONAL FOR PHONE CALLS (BUMPS WE'VE ENCOUNTERED)
1. I say "Hey Siri" and then tell Siri the number to call
2. Siri calls the number and the phone rings.

 December 2014 

 Boston Children's Hospital *Until every child is well.*  HARVARD MEDICAL SCHOOL TEACHING HOSPITAL



**QUICK ACCESS ENCODING
(NON-ELECTRONIC)**



 

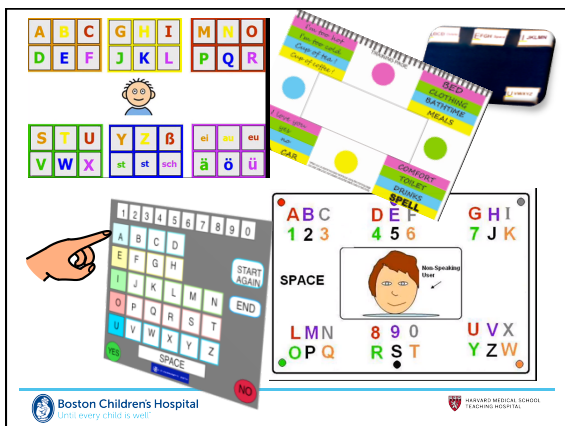
 Boston Children's Hospital *Until every child is well.*  HARVARD MEDICAL SCHOOL TEACHING HOSPITAL

Quick Access *Encoding*

- Standard Etran two-step encoding
- eye gaze and partner assist combination (AEIOU)
- Alpha – color encoding
- EyeSpeak board

 Boston Children's Hospital *Until every child is well.*  HARVARD MEDICAL SCHOOL TEACHING HOSPITAL




Partner Assisted Scanning



- Establish patient's "yes/no" response
- Scan by row/column to identify target

Boston Children's Hospital
Harvard Medical School

Patient photo or video

Partner assist scan





 Boston Children's Hospital
Let's every child is well!


A	B	C	D
E	F	G	H
I	J	K	L
M	N	O	P
Q	R	S	T
U	V	W	X
Y	Z		


YES Delete SPACE END NO


0 1 2 3 4 5 6 7 8 9

itchy






hurts

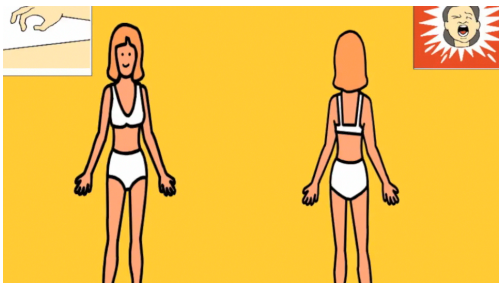






0 NO HURT 1 HURTS A LITTLE BIT 2 HURTS A LITTLE MORE 3 HURTS EVEN MORE 4 HURTS A LOT 5 HURTS WORSE

 Boston Children's Hospital
Let's every child is well!



Review of 'body board'




 Boston Children's Hospital
Let's every child is well!



Etran
Video courtesy of ALS association
(Iowa Chapter)




 Boston Children's Hospital
Until every child is well

 HARVARD MEDICAL SCHOOL
TEACHING HOSPITAL


ELECTRONIC ENCODING


 Boston Children's Hospital
Until every child is well

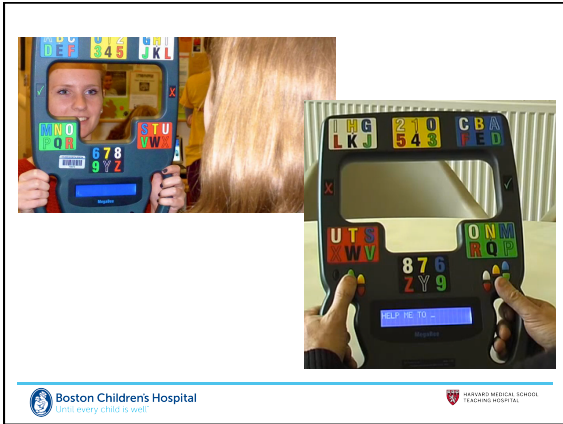
 HARVARD MEDICAL SCHOOL
TEACHING HOSPITAL

Electronic encoding

- Minimize working memory demands for communicator and partner
- Provide a visual script/reminder of message progress

 Boston Children's Hospital
Until every child is well

 HARVARD MEDICAL SCHOOL
TEACHING HOSPITAL



Boston Children's Hospital
Until every child is well

HARVARD MEDICAL SCHOOL
TEACHING HOSPITAL

Abbreviated expansions with Logical Letter Encoding/Salient Letter Encoding

- A logical relationship exists between the key words of the phrase or sentence and the code selected
- O D = Please open the door
- J C = My name is John Costello

Boston Children's Hospital
Until every child is well

HARVARD MEDICAL SCHOOL
TEACHING HOSPITAL



SENIOR CITIZEN TEXTING CODE....

- ATD~At The Doctors
- BFF~Best Friend Fell
- BTW~Bring the Wheelchair
- BYOT~Bring Your Own Teeth
- FWIW~Forgot Where I Was
- GGPBL~Gotta Go Pacemaker Battery Low
- GHA~Got Heartburn Again
- IMHO~Is My Hearing-Aid On
- LMDO~Laughing My Dentures Out
- OMMR~On My Massage Recliner
- OMSG ~Oh My! Sorry, Gas
- ROFLACGU~Rolling On Floor Laughing And Can't Get Up
- TTYL...Talk To You Louder

Boston Children's Hospital
Until every child is well



HARVARD MEDICAL SCHOOL
TEACHING HOSPITAL

**QUICK ACCESS
COMMUNICATION (NOT
ENCODING)**



**Quick Access (non-electronic
continued)**

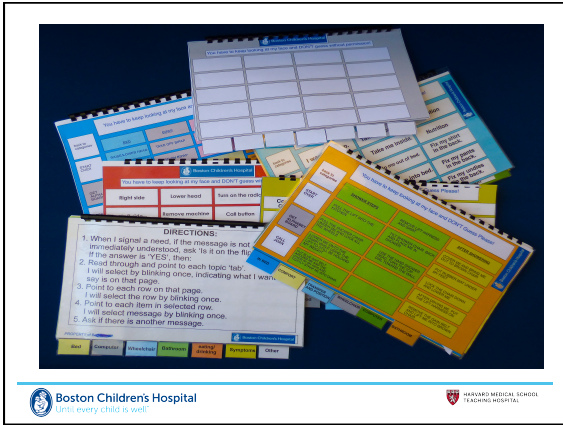
- Personal tabbed flip chart
- Alphacore displays or others with direct selection by:
 - Hand
 - Stylus
 - Safe laser

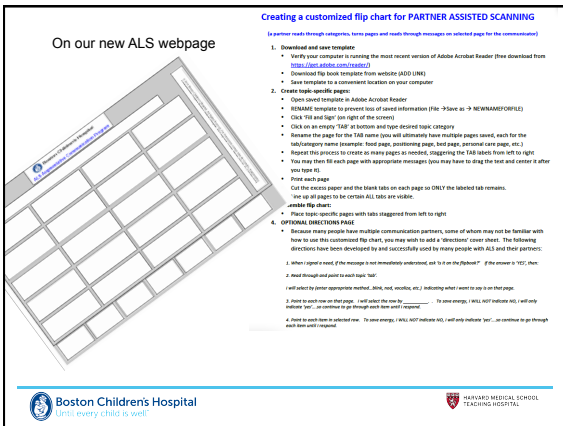



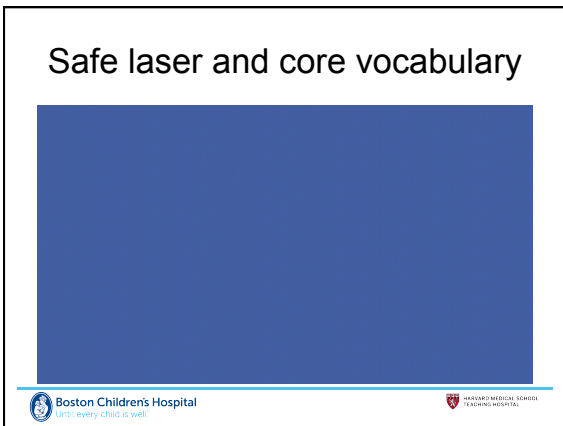
You have to keep looking at my face and DON'T Guess Please!

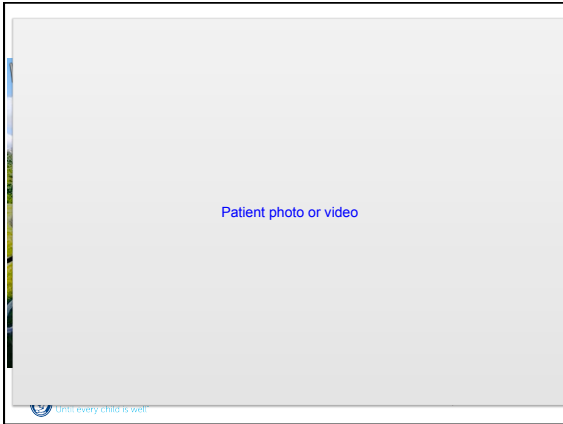
Back to categories	BED	WHEELCHAIR	COMFORT	UTTER
START OVER	RAISE/LOWER HEAD	TAKE OFF GEAR	CANT BREATHE CHANGE POSITION	MOOTH DRY WATER
TAKE ARM OUT OF COVER	TURN ON EQUIP	FEEL	TRASH LIGHTS OUT	CHARTERICK
SET ALPHABET BOARD	RAISE/LOWER FOOT OF BED	ADJUST MASK	ACCE	PIE
CALL JOAN	GOLDHOT	RESTART BIPAP	SMALL TUBED RETIRED NICK	WIDE - SALINE
			FOLLOW TOO HIGH TOO LOW	MOSE - GHS

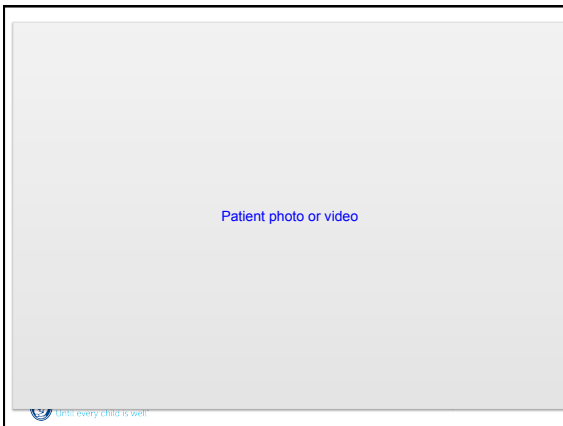



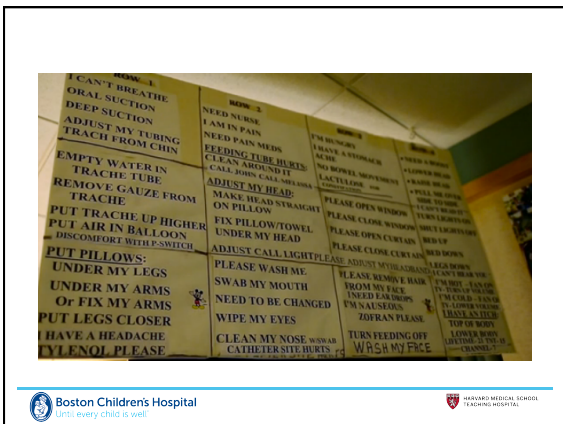












<http://lowtechsolutions.org>
Amy Roman and Margaret Cotts

Boston Children's Hospital
Let's every child be well!

Patient photo or video

Boston Children's Hospital
Let's every child be well!

WRITING

Boston Children's Hospital
Let's every child be well!

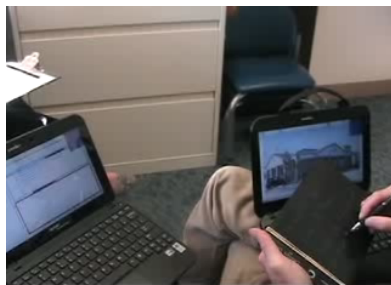
Boogie Board

- Used to write messages
- Can use fingernail
- Lightweight



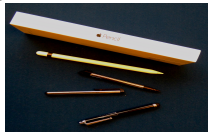


Boogie Board



Writing strategies

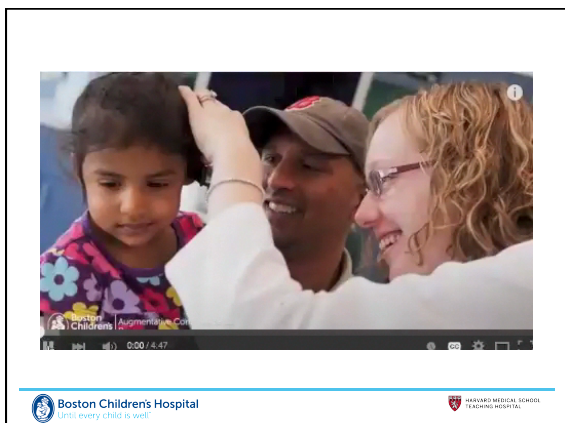
- Notepad
- Notebook
- Boogie board
- Ipad/android – note apps
 - Finger
 - Rubber tipped stylus
 - Jot stylus
 - Apple pen



MESSAGE BANKING

Message Banking

- Introduce concept/definitions and idea of *'technology agnostic'*
- Practice recording with a hand held recorder to support high quality recordings 'in the moment'.
- Share clinical stories and outcomes and provide concrete examples
- Provide full handout with definitions and thousands of examples from people with ALS
- Download, playback, label and store audio files, providing guidance for improving quality if needed.
- Review potential technologies that could accommodate message banking across varied platforms.
- Provide person with ALS with their own recorder to take home and use to functionally record.







- set at 16/44 baud rate
- Must use wind guard
- Hold close to mouth for best quality
- Practice timing of push - speak – push

Boston Children's Hospital
Until every child is well

HARVARD MEDICAL SCHOOL
TEACHING HOSPITAL



Message Banking with your own voice *digitally record and store words, phrases, sentences, personally meaningful sounds and/or stories using your natural voice, inflection and intonation.*


These messages are catalogued as .wav files and may then be linked to messages in a variety of augmentative communication technologies or sound storage files. This will allow you to 'retrieve' a message and speak it in your own voice but does not allow you to create novel messages by spelling. If you have recorded individual words, you may combine those words to create unique messages, although the output will sound more staccato than your natural speaking.

TERMINOLOGY:

Legacy Messages are those messages, often delivered with unique intonation and prosody that are unique or particular to you. It may be a 'trademark' message you say or it may be a trademark *delivery* of a message that many people say. A legacy message does not need to be meaningful to the general population instead it may have unique and personal meaning to only you and a loved one. Further, a legacy message does not need to be real words to be meaningful. It may be the way you clear your throat in a sarcastic manner to communicate "I told you so" or it might be the invented pet name you have for a loved one delivered with your unique voice, intonation and prosody. Similarly, legacy message may be that stereotypical thing you say after your favorite sports team scores or it may be a unique greeting you deliver to friends. Those close to you may be helpful with identifying these **Legacy Messages** because sometimes they are so naturally part of socially relating with others, you may not even be aware you are 'known' for them.

 **PLEASE CITE WORK AS:**
Message Banking with your own voice
 J.M. Costello, PhD
 Boston Children's Hospital
 © 2011, 2014

DEFINITIONS:

Voice Banking is a process of recording a large amount of speech and then using that speech to create a synthetic voice that can be used to communicate.

Message Banking with your own voice is a process of recording personally meaningful words, phrases, sentences, and/or stories using your natural voice and intonation.



Message Banking by proxy is the creation of a synthetic voice that can be used to communicate using a large amount of speech and then using that speech to create a synthetic voice that can be used to communicate.

THE VOCABULARY:

Message Banking with your own voice

Message Banking by proxy

Currently: 64 page Message bank handout

64 page handout will be on new ALS website but can be found now at:

- <http://www.childrenshospital.org/~media/messagebankdefinitionsandvocab201613.ashx?la=en>

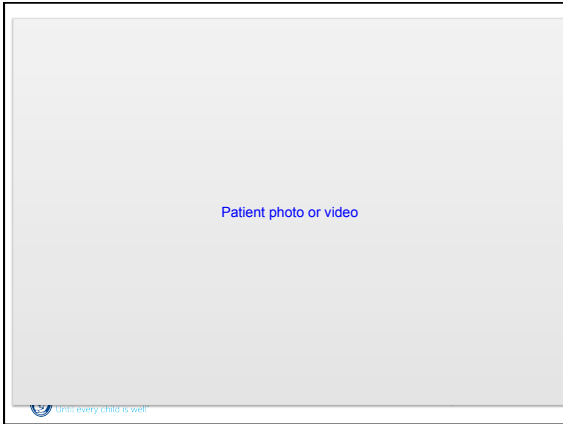


Patient photo or video

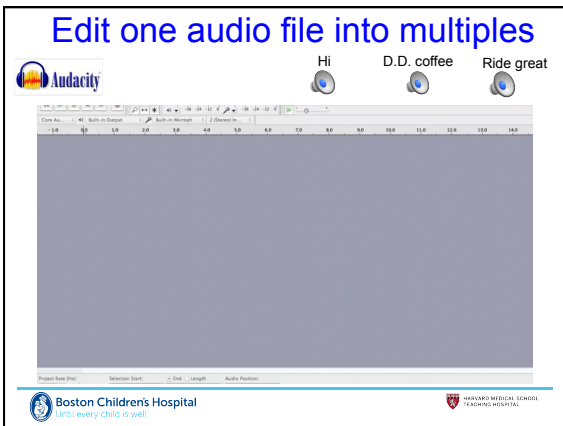


Patient photo or video

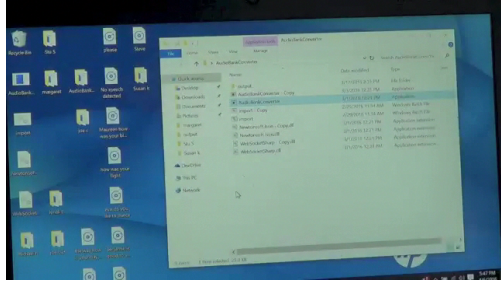


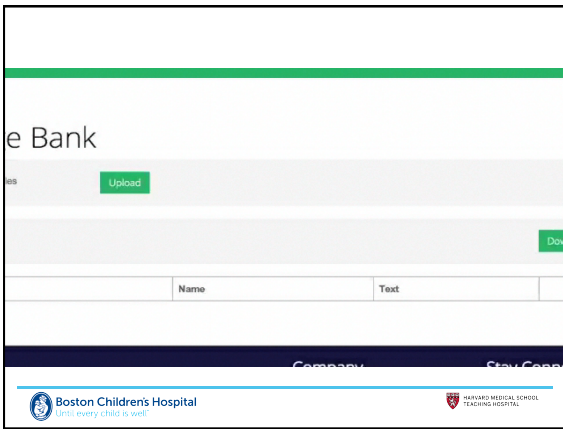


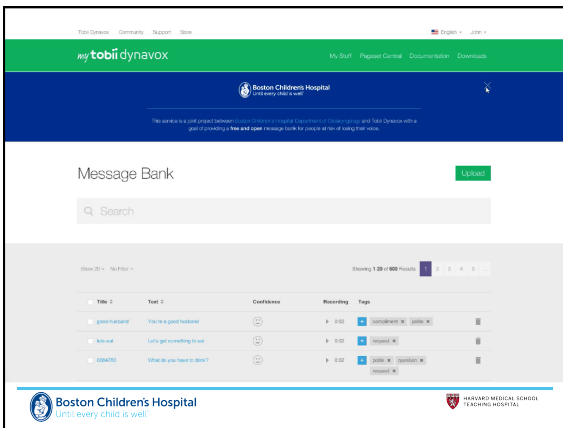





Audio conversion beta.1 (will be free to all)







Stu is in the process of 'voice banking' where he records messages in his own voice, should he be robbed of it, due to ALS. Tonight's job was to record Swanson's commands. She was banished to stay with me behind closed doors, because she kept responding to all of his commands. The last, Swanson, fetch caused her to run out to the kitchen and bring anything she could find...a bag of cough drops. She is not at all happy because she can still hear her commands and can't get out to help her guy. What a hoot. Love our little girl!



Boston Children's Hospital
Until every child is well

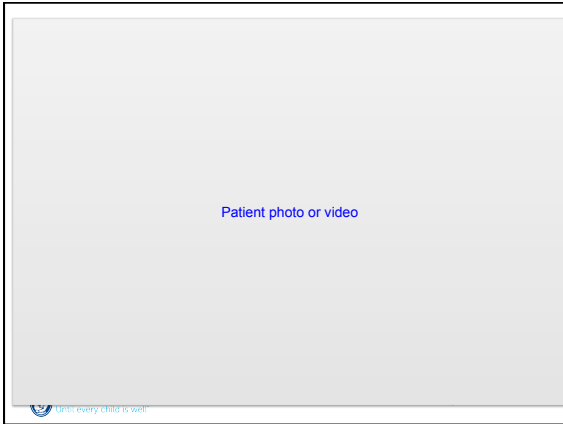
HARVARD MEDICAL SCHOOL
FACULTY MEDICINE

Patient photo or video

Until every child is well



Patient photo or video

Until every child is well

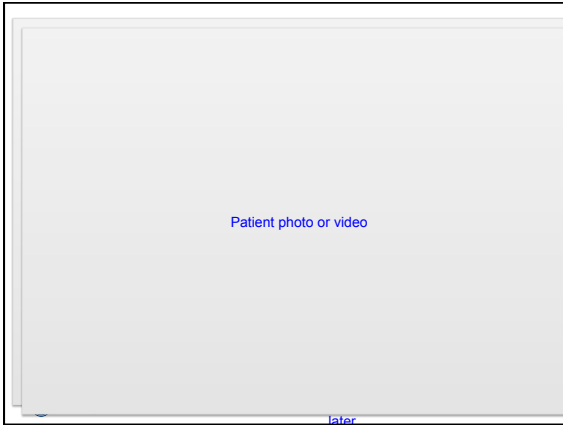


Vocabulary

- Vocal play with children
- Many loving messages to children
- Many messages to wife
- Vacation/quality family time messages
- Anger
- Defending self dignity anticipating severe disability
- Directives to anticipated staff
- Changes in physical state
- Refusal of medical treatment

 Boston Children's Hospital  HARVARD MEDICAL SCHOOL
TEACHING HOSPITAL

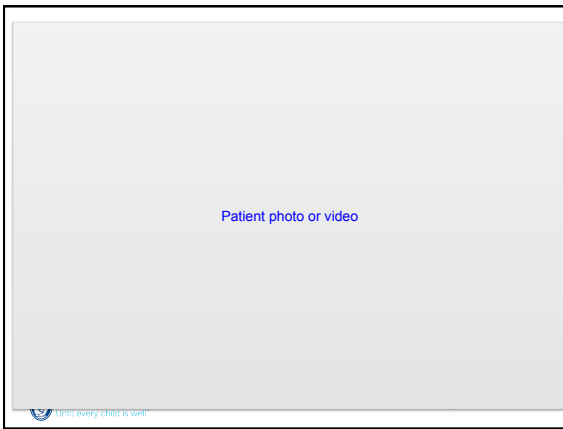


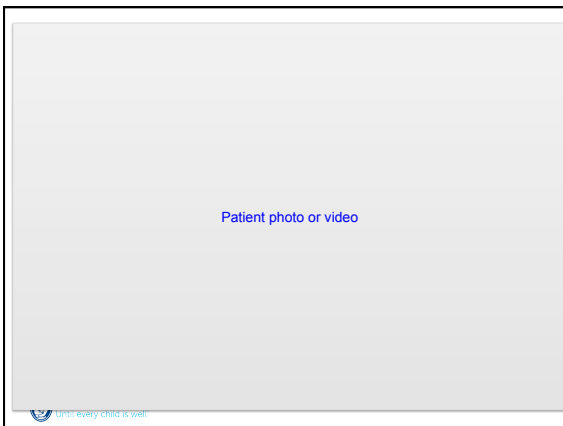


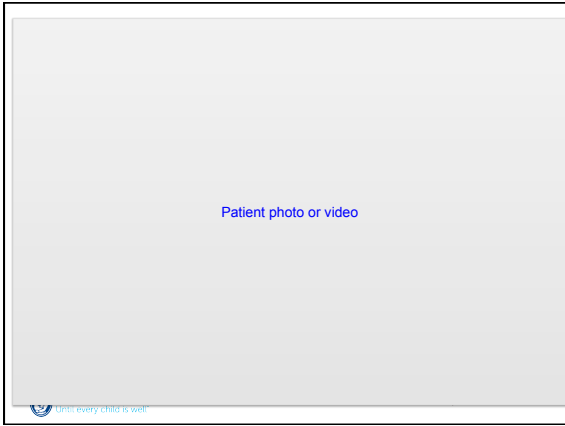


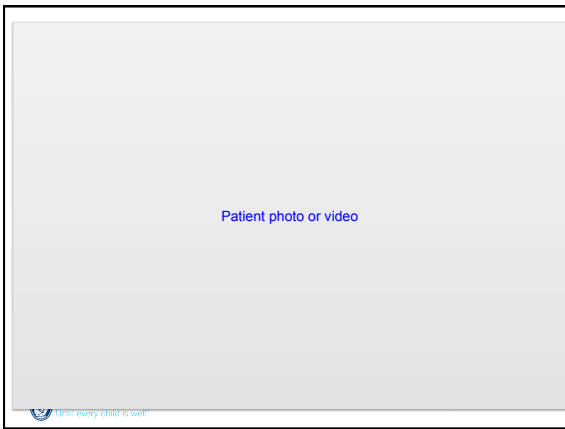




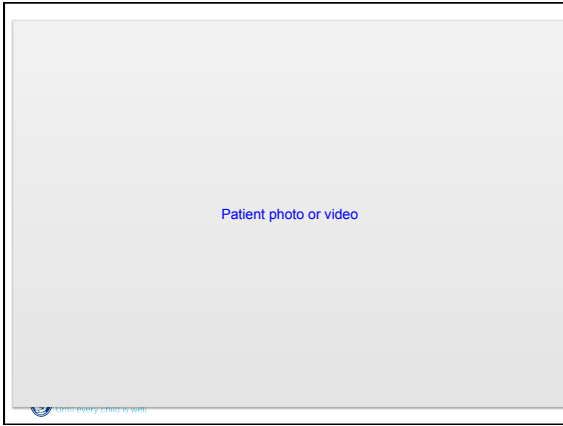






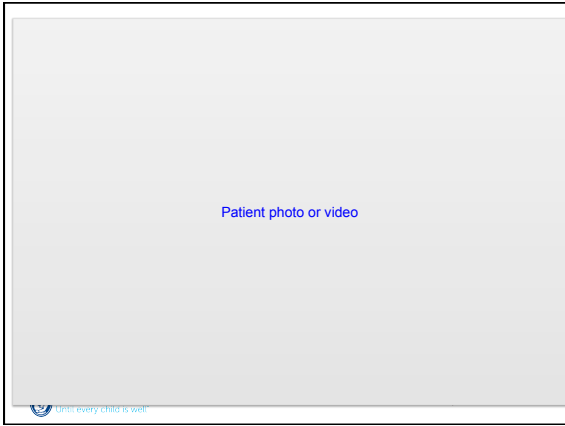


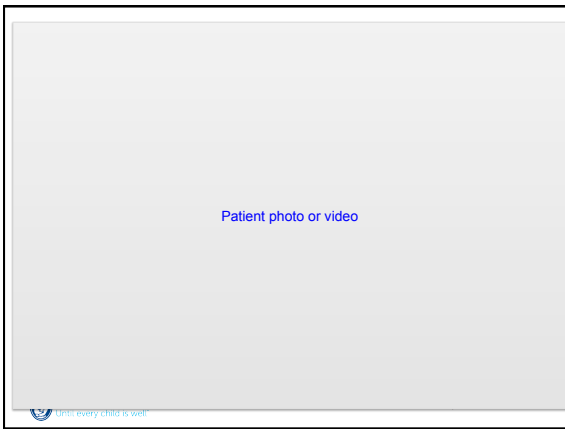




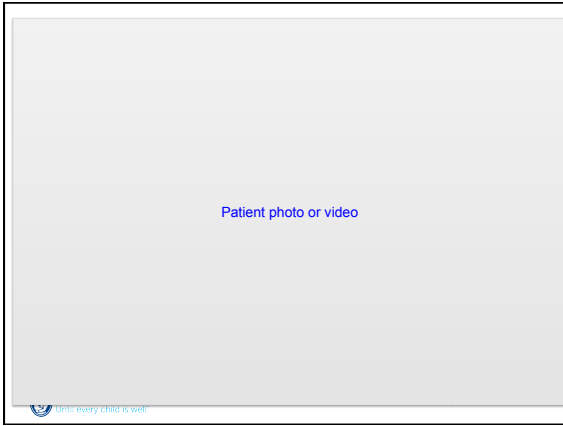


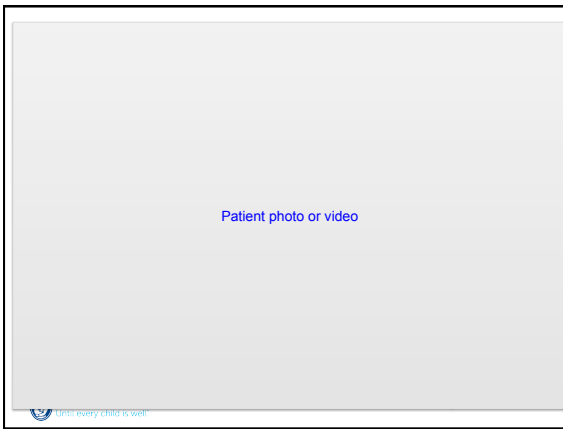




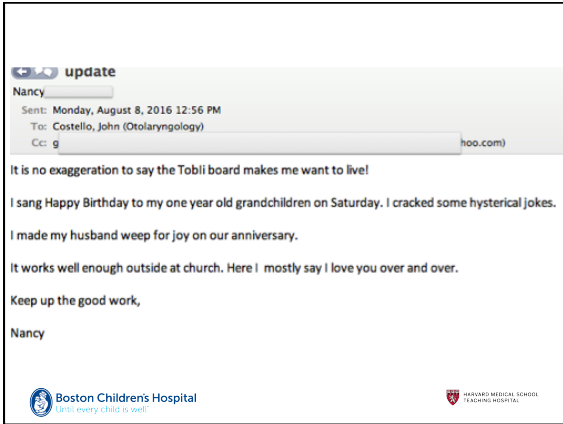


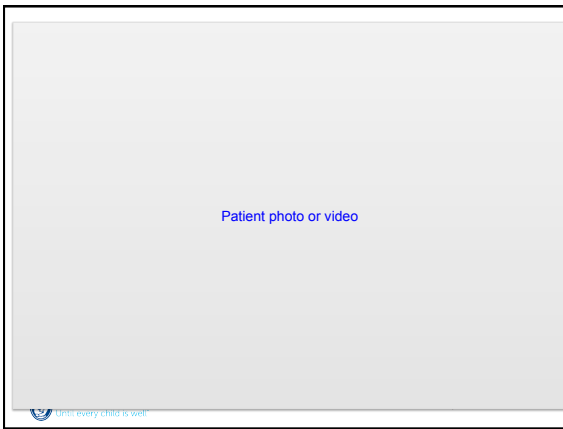




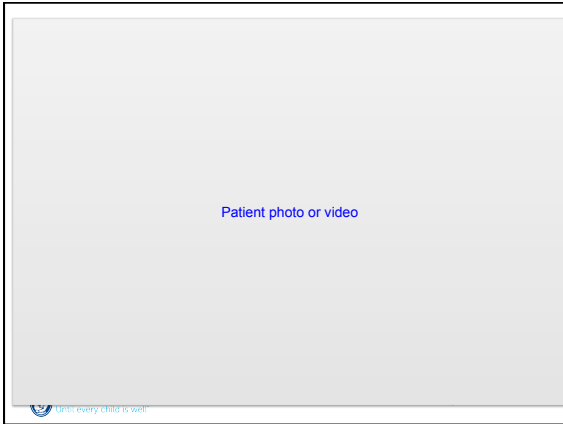


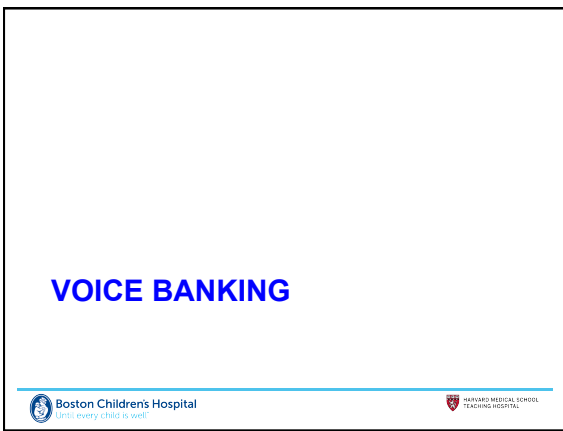


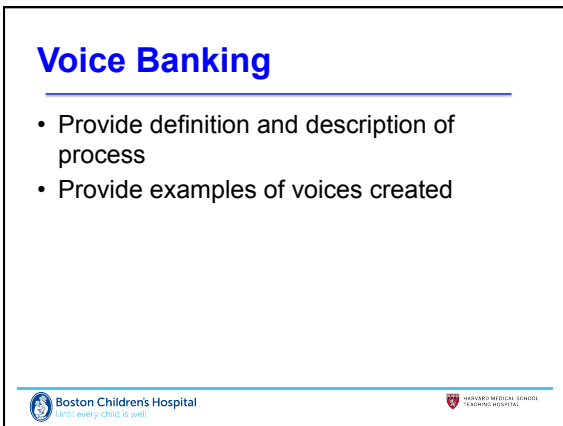












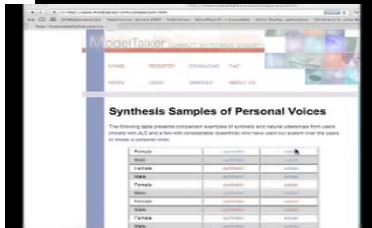
Voice Banking is a process of recording a large inventory of your speech that is then used to create a synthetic voice that approximates your natural voice.

Done successfully, this would allow one to spell and create unique messages and then speak them through a synthesizer that approximates one's natural speech. The science behind this process continues to be in development with beta-versions of available software. The ModelTalker is one such project from the University of Delaware Speech Research Lab. The website is: www.asel.udel.edu/speech/ModelTalker.html



ModelTalker <http://www.modeltalker.com>

The ModelTalker System was developed by the Nemours Speech Research Laboratory located at the Alfred I. duPont Hospital for Children with funding from the National Institute for Disability and Rehabilitation Research, the National Institutes of Health, and Nemours



<https://www.modeltalker.org/build-your-voice/>



Build Your Voice

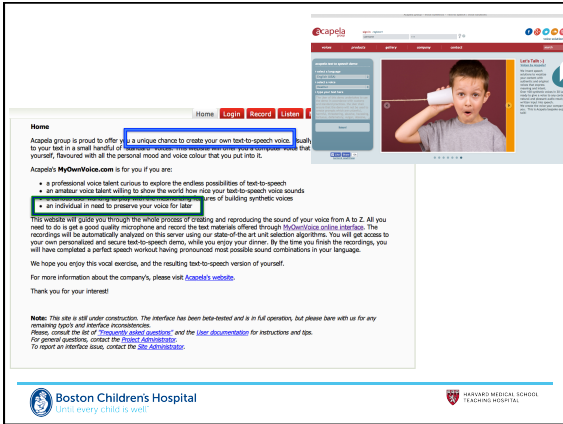
We're here to help you create a personal synthetic voice that you can use in your communication device or app. Here's what you will need to do:

1. Register with us to create a secure account.
2. Choose the recording method you want to use: MTRVR (Windows only) or our web-based recording tool.
 - If using MTRVR, install it, go through the tutorial, and get set up to record.
 - If using the web recorder, follow our interactive online training.
3. Record 10 screening sentences, upload them to our server, and wait for an email from us.
 - If everything is fine, we will provide instructions for moving on to step 4.
 - If we see any problems, we can suggest ways to fix them and may ask you to repeat step 3.
4. Record the full inventory of 1600 sentences and upload them to our server.
5. Request your voice in a downloadable form for your computer, mobile device, or speech generating device.

If you are ready to have us walk you through the steps, let's

[Get Started](#)












Custom voice created by Scottish company 'Cereproc'
<http://www.cereproc.com/en/home>



 Boston Children's Hospital
Until every child is well.  HARVARD MEDICAL SCHOOL
TEACHING HOSPITAL


Language	Completion Percentage	Create my voice!
English (US)	100.0%	Done
English (UK)	0.0%	Not enough recorded sentences
French (Canada)	0.0%	Not enough recorded sentences
North American Spanish	0.0%	Not enough recorded sentences
English (Australia)	0.0%	Not enough recorded sentences



Language:

Text to pronounce:


Speed: %


Swamp: %




 Boston Children's Hospital
Until every child is well.  HARVARD MEDICAL SCHOOL
TEACHING HOSPITAL


Dr. Rupal Patel, VOCALiD
with Samantha Grimaldo
<http://www.vocalid.co/how>




 Boston Children's Hospital
Until every child is well.  HARVARD MEDICAL SCHOOL
TEACHING HOSPITAL


- ◆ Model Talker
- ◆ Cereproc (Edinburgh Scotland)
- ◆ OKI Electronic Industry Co Japan
- ◆ Edinburgh Voice Banking and Reconstruction project
- ◆ Acapella project
- ◆ VOCALiD

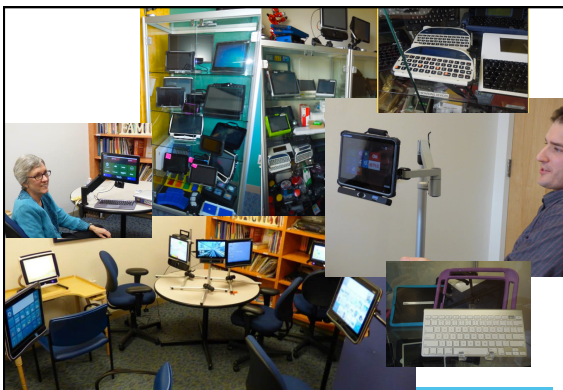
 Boston Children's Hospital
Until every child is well

 HARVARD MEDICAL SCHOOL
TEACHING HOSPITAL

SPEECH GENERATING DEVICE ASSESSMENT

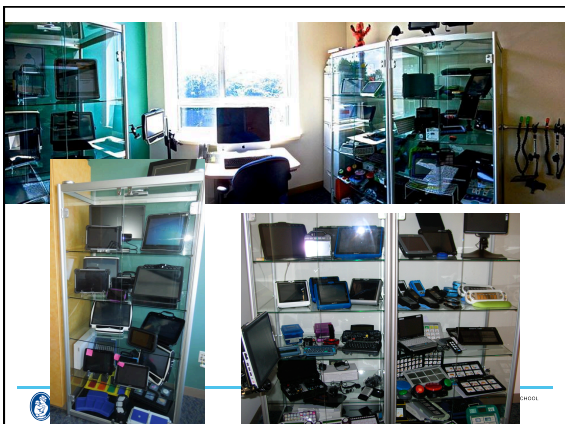
 Boston Children's Hospital
Until every child is well

 HARVARD MEDICAL SCHOOL
TEACHING HOSPITAL



 Boston Children's Hospital
Until every child is well

 HARVARD MEDICAL SCHOOL
TEACHING HOSPITAL



Speech Generating Device Assessment and trial(s)

Language Features:

- core vocabulary
- phrase
- single words
- Alphabet
- message organization (grid, list, taxonomic, contextual, etc.)

Encoding strategies

- Abbreviation expansion
- prediction (word, grammar, morphology)
- letter stream prediction (Dasher)

Access features (in concert with OT)

- *Direct selection (unaided)*
- *Direct selection (aided)*
 - headmouse
 - eye tracking
 - dwell, switch, blink
- *Scanning*
 - Single switch
 - Two switch
 - Use of switch interface for technologies
 - Software vs. tech access options within tech (accessibility features)



Speech Generating Device Assessment and trial(s) continued

Integration features:

- Internet
- Telephone
- television
- text
- custom software
- system mirroring (Splashtop, Team Viewer, etc.)

Other:

- Language
- Text
- Symbols
- Synthesizer (and integration with environment such as 'Alexa')



1st to 5th of 2016 New Corporation Chart (in of 18 rows) | 1/2016 Boston Children's Hospital

Company	Revenue	Profit	Operating Profit	Operating Margin	EBITDA
ABC	100	20	10	10%	30
DEF	200	40	20	10%	60
GHI	300	60	30	10%	90
JKL	400	80	40	10%	120
MNO	500	100	50	10%	150

Boston Children's Hospital
Until every child is well™

HARVARD MEDICAL SCHOOL
 TEACHING HOSPITAL

Predictable (Therapy Box):

Import audio in Predictable

NOTE: You will not be able to hear the recorded voice until the end of the process

1. open iTunes
2. click on the idevice
3. select the 'app' tab
4. then scroll to the bottom where you can see the 'file sharing' section
5. click on 'the predictable'
6. then select 'add to'
7. find and select the audio you wish to import into Predictable
8. you can select a group of recordings
9. format can be wav or others
10. from the app go to phrases
11. select the pencil icon
12. then select the phrase you wish to pair with the recording OR add new phrase
13. scroll through until 'choose from library'
14. the recordings will be listed alphabetically
15. select and it will pair with the text
16. exit edit mode to hear the recording

Boston Children's Hospital
Until every child is well™

HARVARD MEDICAL SCHOOL
 TEACHING HOSPITAL

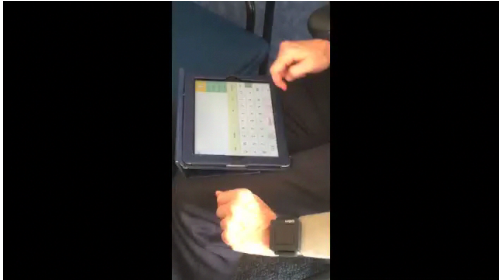
Ion Clipster blue tooth speaker

- Ion Clipster Ultra Portable Bluetooth Speaker with Built-in Clip (Orange)**
 - SKU: 100100
 - MPN: 100100
 - UPC: 606010100100
 - MSRP: \$29.99
- ION Clipster Ultra Portable Bluetooth Speaker with Built-in Clip (Blue)**
 - SKU: 100100
 - MPN: 100100
 - UPC: 606010100100
 - MSRP: \$29.99
- ION Clipster Ultra Portable Bluetooth Speaker with Built-in Clip (Green)**
 - SKU: 100100
 - MPN: 100100
 - UPC: 606010100100
 - MSRP: \$29.99
- ION Clipster Ultra Portable Bluetooth Speaker with Built-in Clip (Black)**
 - SKU: 100100
 - MPN: 100100
 - UPC: 606010100100
 - MSRP: \$29.99

Boston Children's Hospital
Until every child is well™

HARVARD MEDICAL SCHOOL
 TEACHING HOSPITAL

Wearable amplifier



Boston Children's Hospital
Let's every child's well

HARVARD MEDICAL SCHOOL
TEACHING HOSPITAL

Occupational therapy/Assistive Technology Protocol of Assessment
Considerations (over view as I am NOT an OT)

Physical Access Control Site assessment	
Positioning/support	
Access to mobile technology	
Phone access	
Call system/attention signal access	
Environmental control	
Access to books (hardcopy or digital)	
Computer access: keyboard	
Computer Access: mouse	
Computer Access: speech/voice	
Speech Generating Device Access	
Training	

Boston Children's Hospital
Let's every child's well

HARVARD MEDICAL SCHOOL
TEACHING HOSPITAL

Physical Access Control Site assessment



- Direct selection
- Non-direct selection
- Best control site (s) * don't over fatigue one control site:
 - Head, eyes, mouth, tongue, respiratory (sip/puff), voice, chin, shoulder, trunk, arm/hand, leg, knee, foot.
 - Pressure, excursion, range
- Neural access (neural switch), BCI

Boston Children's Hospital
Let's every child's well

HARVARD MEDICAL SCHOOL
TEACHING HOSPITAL


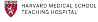
General considerations for access selection:

- (1) the range and control of movement
- (2) the amount of training and practice required to use and
- (3) the short and long-term costs/benefits of using access method



Phone Access

- Landline options
- Speaker phone options
- Smartphone use
- Hands-free cell phone use
- Switch scanning on iPhone
- Siri
- Mounting options

Call system/attention signal

- Commercial wireless doorbell
- Switch-adapted attendant alarm
- Baby monitor
- Portable speech output device with or without switch

Environmental control

- Enlarged TV remote controllers
- Switch access to TV functions, lights, fan
- Voice control for TV functions, lights, fan
- Control through SGD



Access to books (hardcopy or digital)

- Kindle/iBooks
- Hardcopy books/ book holders
- Page turners
- Audio books



Computer access: *keyboard*

- Built in accessibility features
- Keyboard/key size
- Ergonomic keyboards
- Forearm supports
- Typing aids
- Word prediction software
- Onscreen keyboard software



Computer Access: *speech*

- Speech recognition software
- Dictation strategies to improve software recognition
- Built in commands
- Custom commands
- Voice mouse controls



Speech Generating Device Access

- Touch screen
- Stylus and stylus holders
- Keyboard
- Different computer mice
- And/or trackball
- Mouse
- Headtracking access (head mouse, gyro mouse, etc.)
- Adapted mouse
- Switch scanning
- Eyetracking access



Physical Access Control Site assessment (access method, access site, access settings)

- Direct selection
 - Preferred method – if possible
 - Positioning/mounting
 - Adaptive stylus
 - Computer adjustments
- Indirect selection
- Best control site (s)
 - Head, eyes, mouth, tongue, respiratory (sip/puff), voice, chin, shoulder, trunk, arm/hand, leg, knee, foot.
 - Pressure, excursion, range



Considerations for access selection:

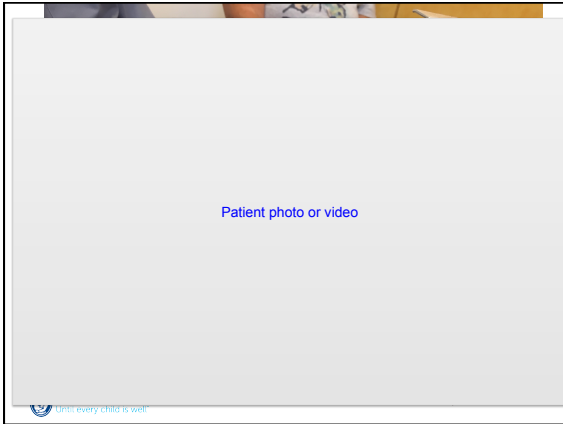
- ❖ Motor control that is reliable and repeatable
- ❖ Motor control that is fine-tuned
- ❖ Include eye control and voice production
- ❖ Exploit the strengths and circumvent the weakness

- (1) the range and control of movement
- (2) the amount of training and practice required to use and
- (3) the short and long-term costs/benefits of using access method

Baker's formula....


$$\frac{\text{Motivation}}{\text{Physical Effort} \quad \text{Cognitive Effort} \quad \text{Time}}$$

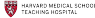





Access to iPad/Android tablets


- Position of device
- Use of finger and/or stylus
- Voice typing
- Siri
- Mounting options


 Boston Children's Hospital *Until every child is well*

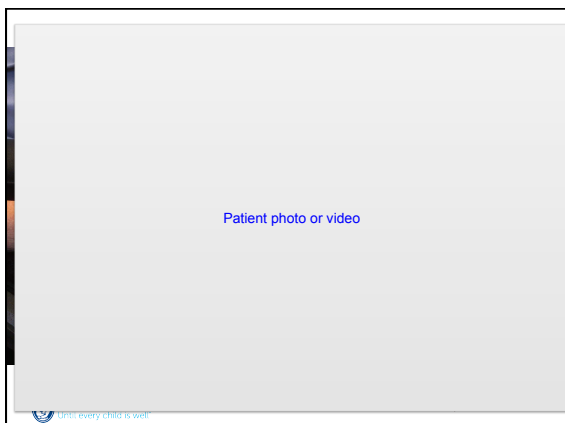
 HARVARD MEDICAL SCHOOL
TEACHING HOSPITAL



direct



 Boston Children's Hospital *Until every child is well*

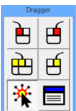
 HARVARD MEDICAL SCHOOL
TEACHING HOSPITAL



Computer Access: *mouse*



- Customizing computer mouse settings
- Adaptive/alternative cursor control options
- Hand –based
- Head-based
- Foot-based
- Eye-based
- Auto click software
- Switch click options



 





Example: Origin Head Mouse



Quaha Zono Gyroscopic Air Mouse




Foot Mouse



- Foot time mouse 
- Trackball 

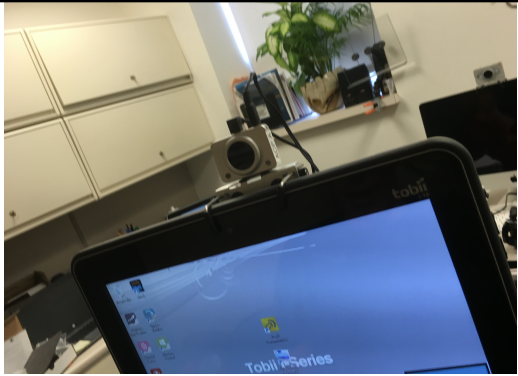
 Boston Children's Hospital
Until every child is well. 



Head Mice

- Origin Instruments
- Quah Zono
- Natural Point
- Tracker Pro



 Boston Children's Hospital
Until every child is well. 



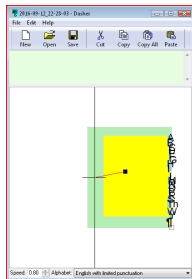
 Boston Children's Hospital
Until every child is well. 

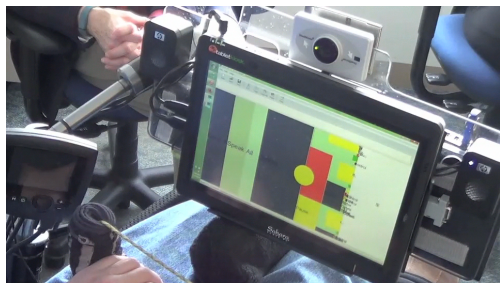
Switch selection



Video game style

- Dasher
 - Streaming letters
 - Attack of the alphabet
 - Minimal movement
 - Word and phrase prediction





Voice input

- (Hey) Siri
- OK Google
- Alexa
- Not intended as an accommodation for a disability. Will have difficulty with soft or dysarthric speech. Limited Functionality
 - Siri cannot voice answer an incoming call
 - Hey Siri may require the iPhone to be plugged in

Voice input - computer


- Dragon Naturally Speaking
- Microsoft built in voice recognition software
- Not intended as an accommodation for a disability. Will have difficulty with soft or dysarthric speech.
 - Best for word processing
 - Custom commands available (Dragon)
 - Plan for a learning curve



Eye Gaze Interface – The eyes have it






Brain Computer Interface (BCI)

- Projects with which we are currently affiliated:
- Oregon Health Science Project RSVP
- National Center for Adapted Neuro Technologies Wadsworth Ctr. I
NY




 





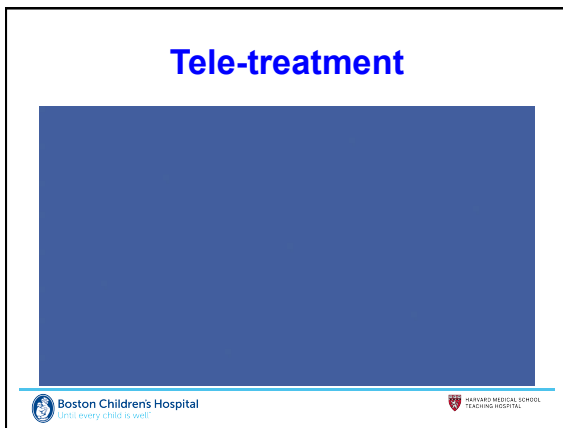
Brain Computer interface

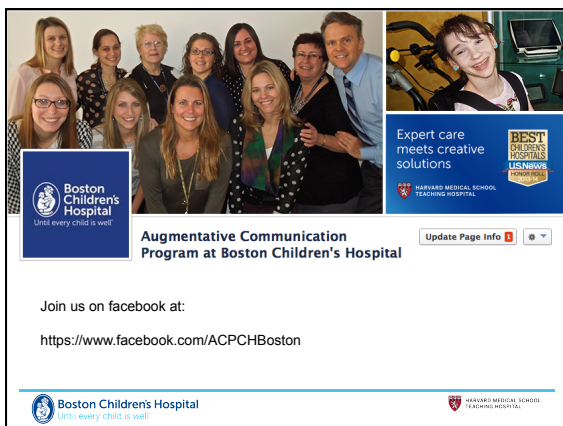
- Projects with which we are currently affiliated:
- Oregon Health Science Project RSVP
- National Ctr for Adapted Neuro Technologies Wadsworth Ctr.









Feb 16, 2016

Dear John,

Thank you for our meeting last Tues. As we move forward slowly, I appreciate your intent to truly understand Eric and his desires. As you have surmised he is slowly processing what he wants, and "forcing" decisions does not work. I also greatly appreciate your passion and resulting offer to always be available, even to doing home visits. I later realized what relief I felt, knowing we would not somehow be abandoned because we could not resolve the next step in a timely manner. Truly...I was relieved of an anxiety I had not realized I had.

Amelia



A series of horizontal lines for a handwritten response.

A large table with multiple columns and rows, likely a patient list or schedule, with headers for Name, Room, and various medical or administrative details.

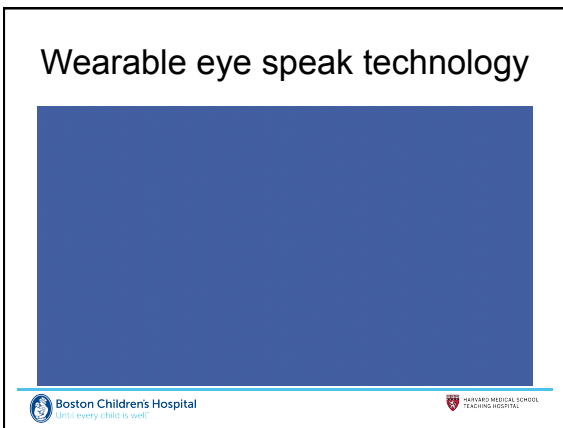


A series of horizontal lines for a handwritten response.

A table with multiple columns and rows, likely a patient list or schedule, with headers for Name, Room, and various medical or administrative details.

A series of horizontal lines for a handwritten response.











Calibrating at 14 months


Boston Children's Hospital
Let's every child is well!

HARVARD MEDICAL SCHOOL
TEACHING HOSPITAL

Page linking


Boston Children's Hospital
Let's every child is well!

HARVARD MEDICAL SCHOOL
TEACHING HOSPITAL

Very early Eye development:	
Eye tracking a slow moving object with jerky muscle movements	infant
Eye coordination and tracking (track a slow moving object with smooth eye movement)	By three months
Depth perception develops. Binocularity allows for development of three dimensional perception	Three to five months
Seeing color: difficult to determine and likely infants are distinguishing brightness and contrast. DO distinguish between two highly contrasted colors such as black and white	By two to six weeks
Object and face recognition: At birth can see facial features at arms length BUT is attracted to borders so will gaze at edge of face or hairline	infant
Baby notices facial features such as the nose and mouth	Two to three months
Differentiate between mother's face and a stranger's face	Three to five months
<div style="display: flex; justify-content: space-between; align-items: center;">  Boston Children's Hospital <i>Let's every child is well!</i>  HARVARD MEDICAL SCHOOL TEACHING HOSPITAL </div>	

Eye FX from Tobii	Developmental considerations
Blank screen engagement (exploring with cause and effect) make something happen by looking anywhere	
Object displacement (learning to target, track and dwell) select to balloon to pop, spat, etc.	Perhaps black and white, high contrast edges,
Zoned focusing (developing control and accuracy) turn on all the light bulbs	
Active exploration (enhancing precision and timing)	
Controlled targeting (look and dwell)	
